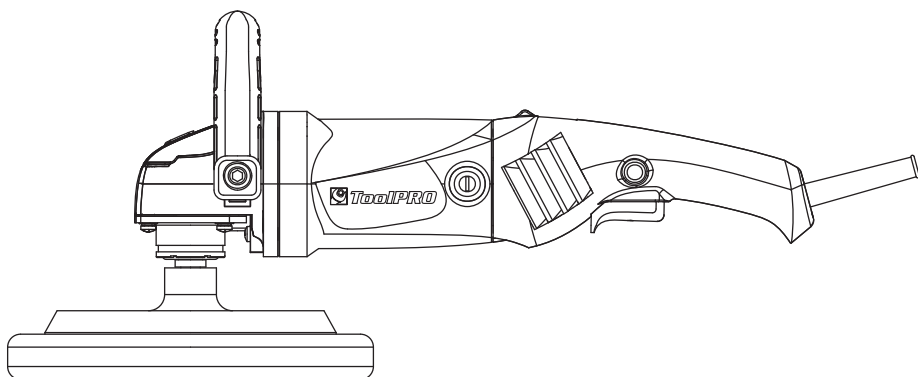


# TOOLPRO

## 1200W Car Polisher

Instruction Manual

PBP1801



### After Sales Support

FREE CALL 1300 889 028  
EMAIL: [salesau@positecgroup.com](mailto:salesau@positecgroup.com)

**Important** - Please read these instructions fully before operating or maintaining your Car Polisher

These instructions contain important information that will help you get the best from your Car Polisher, ensuring it remains safe to operate.

If you need help or have damaged or missing parts, call the Customer Helpline on 1300 889 028

# Contents

<b>Safety Information.....</b>	<b>3</b>
<b>In The Box.....</b>	<b>6</b>
<b>Accessories.....</b>	<b>6</b>
<b>Operating Instructions.....</b>	<b>7</b>
<b>Working Hints For Your Polisher.....</b>	<b>10</b>
<b>Maintenance.....</b>	<b>10</b>
<b>Trouble Shooting.....</b>	<b>11</b>
<b>Technical Data.....</b>	<b>11</b>

# Safety Information

**Important** - Please read these instructions fully before starting assembly

## Warning Symbols



To reduce the risk of injury. Please read the instruction manual



Warning



Wear ear protection



Wear eye protection



Wear dust mask



Double insulation



RCM marking

ABN: Australian Business Number. By this number, business information such as entity type, status, business location etc. can be found at website <http://abr.business.gov.au>.

ABN of Positec Australia Pty Limited is 14 101 682 357

# Safety Information

**Important** - Please read these instructions fully before starting assembly

## General Power Tool Safety Warnings



**WARNING!** Read all safety warnings and all instructions. Failure to follow the warnings and instructions may result in electric shock, fire and/or serious injury.

### Save all warnings and instructions for future reference.

The term "power tool" in the warnings refers to your mains-operated (corded) power tool or battery-operated (cordless) power tool.

#### 1) Work area safety

- a) **Keep work area clean and well lit.** Cluttered or dark areas invite accidents.
- b) **Do not operate power tools in explosive atmospheres, such as in the presence of flammable liquids, gases or dust.** Power tools create sparks which may ignite the dust or fumes.
- c) **Keep children and bystanders away while operating a power tool.** Distractions can cause you to lose control.

#### 2) Electrical safety

- a) **Power tool plugs must match the outlet. Never modify the plug in any way. Do not use any adapter plugs with earthed (grounded) power tools.** Unmodified plugs and matching outlets will reduce risk of electric shock.
- b) **Avoid body contact with earthed or grounded surfaces, such as pipes, radiators, ranges and refrigerators.** There is an increased risk of electric shock if your body is earthed or grounded.
- c) **Do not expose power tools to rain or wet conditions.** Water entering a power tool will increase the risk of electric shock.
- d) **Do not abuse the cord. Never use the cord for carrying, pulling or unplugging the power tool. Keep cord away from heat, oil, sharp edges or moving parts.** Damaged or entangled cords increase the risk of electric shock.
- e) **When operating a power tool outdoors, use an extension cord suitable for outdoor use.** Use of a cord suitable for outdoor use reduces the risk of electric shock.
- f) **If operating a power tool in a damp location is unavoidable, use a residual current device (RCD) protected supply.** Use of an RCD reduces the risk of electric shock.

#### 3) Personal safety

- a) **Stay alert, watch what you are doing and use common sense when operating a power tool. Do not use a power tool while you are tired or under the influence of drugs, alcohol or medication.** A moment of inattention while operating power tools may result in serious personal injury.
- b) **Use personal protective equipment. Always wear eye protection.** Protective equipment such as dust mask, non-skid safety shoes, hard hat, or hearing protection used for appropriate conditions will reduce personal injuries.
- c) **Prevent unintentional starting. Ensure the switch is in the off-position before connecting to power source and/or battery pack, picking up or carrying the tool.** Carrying power tools with your finger on the switch or energising power tools that have the switch on invites accidents.

# Safety Information

**Important** - Please read these instructions fully before starting assembly

## General Power Tool Safety Warnings

- d) **Remove any adjusting key or wrench before turning the power tool on.** A wrench or a key left attached to a rotating part of the power tool may result in personal injury.
- e) **Do not overreach. Keep proper footing and balance at all times.** This enables better control of the power tool in unexpected situations.
- f) **Dress properly. Do not wear loose clothing or jewellery. Keep your hair, clothing and gloves away from moving parts.** Loose clothes, jewellery or long hair can be caught in moving parts.
- g) **If devices are provided for the connection of dust extraction and collection facilities, ensure these are connected and properly used.** Use of dust collection can reduce dust-related hazards.

### 4) Power tool use and care

- a) **Do not force the power tool. Use the correct power tool for your application.**  
The correct power tool will do the job better and safer at the rate for which it was designed.
- b) **Do not use the power tool if the switch does not turn it on and off.** Any power tool that cannot be controlled with the switch is dangerous and must be repaired.
- c) **Disconnect the plug from the power source and/or the battery pack from the power tool before making any adjustments, changing accessories, or storing power tools.** Such preventive safety measures reduce the risk of starting the power tool accidentally.
- d) **Store idle power tools out of the reach of children and do not allow persons unfamiliar with the power tool or these instructions to operate the power tool.**  
Power tools are dangerous in the hands of untrained users.
- e) **Maintain power tools. Check for misalignment or binding of moving parts, breakage of parts and any other condition that may affect the power tool's operation. If damaged, have the power tool repaired before use.** Many accidents are caused by poorly maintained power tools.
- f) **Keep cutting tools sharp and clean.** Properly maintained cutting tools with sharp cutting edges are less likely to bind and are easier to control.
- g) **Use the power tool, accessories and tool bits etc. in accordance with these instructions, taking into account the working conditions and the work to be performed.** Use of the power tool for operations different from those intended could result in a hazardous situation.

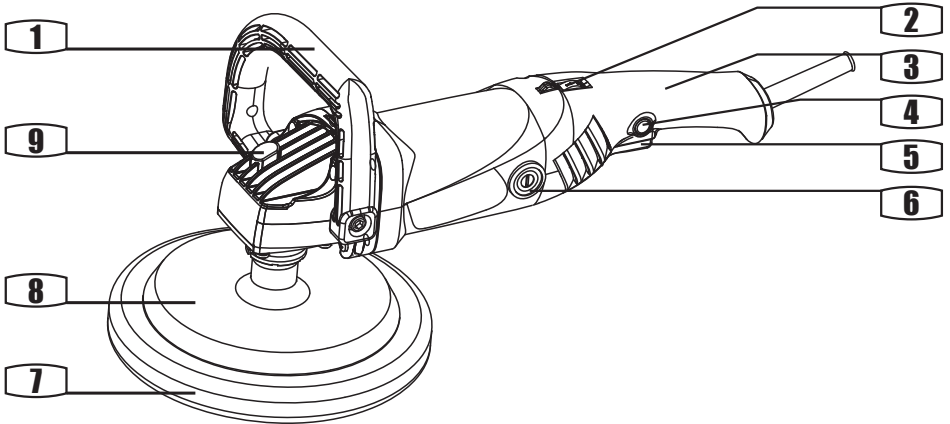
### 5) Service

**Have your power tool serviced by a qualified repair person using only identical replacement parts.** This will ensure that the safety of the power tool is maintained.

# In The Box

## Parts

- ① D-type auxiliary handle
- ② Variable speed control
- ③ Rear handle
- ④ Lock-on button
- ⑤ On/off switch
- ⑥ Brush cover
- ⑦ Polish bonnet
- ⑧ Rubber disc
- ⑨ Spindle lock button



# Accessories

Hex key	1pc
Auxiliary handle	1pc
Rubber disc	1pc
Polish bonnet	1pc
Extra carbon brush	1pc

# Operating Instructions



**NOTE:** Before using the tool, read the instruction book carefully.

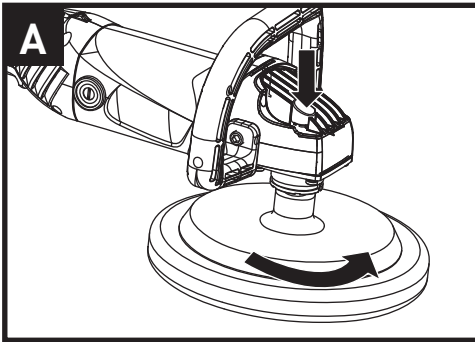
## 1. INSTALLING THE RUBBER DISC (SEE FIG. A)

Insert the disc onto the axis of the machine head and rotate by hand in a counter-clockwise direction until you find that the axis is rotating along with the disc. Then depress the spindle lock button (9) and continue to rotate the disc counter-clockwise until the disc is locked in place.



**ATTENTION:** The spindle lock button must only be used when changing a disc. Never press it when the disc is rotating.

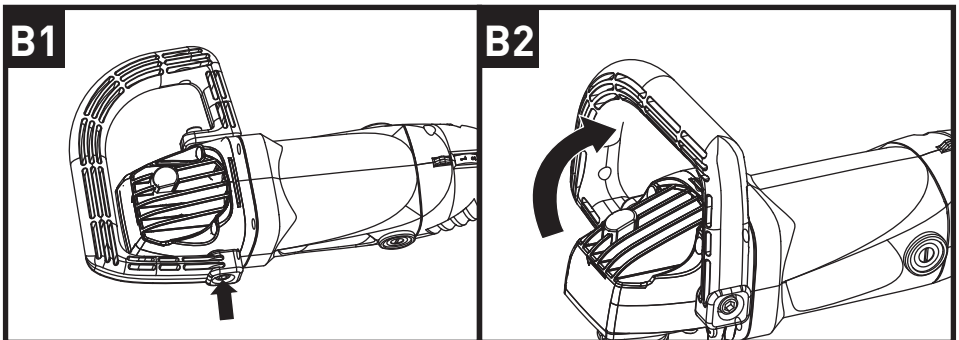
**Remove the plug from the socket before carrying out the adjustment.**



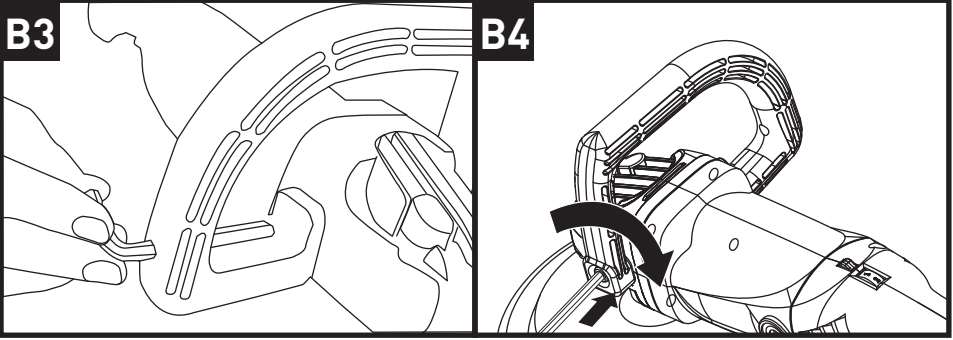
## 2. INSTALLING THE AUXILIARY HANDLE (SEE FIG. B1- B4)

For your personal safety we recommend using the auxiliary handle at all the time.

Slide the handle from the bottom of the machine head into the correct position as shown in B1, then rotate the handle around to a desired position. Tighten the screw with the hex key in a clockwise direction. Tighten the other screw on the other side of the machine head fully to lock the handle.



# Operating Instructions

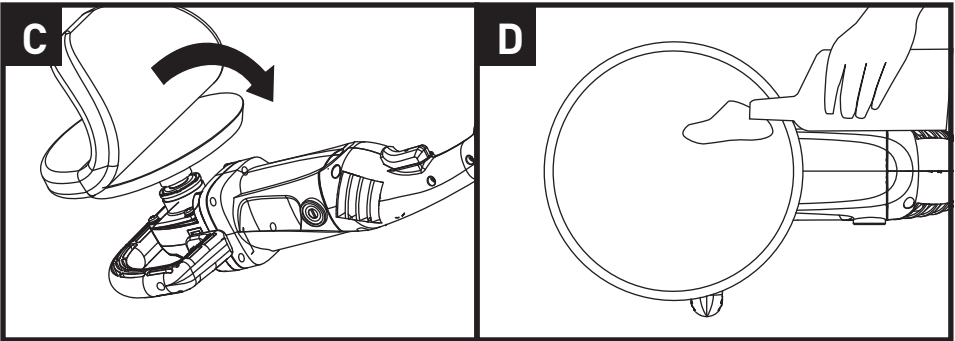


### 3. PLACE THE BONNET (SEE FIG. C)

Place the required bonnet securely over the sponge pad and make sure it's centrosymmetric, otherwise the polisher vibrates badly.

### 4. SPREAD THE POLISH (SEE FIG. D)

Spread about a tablespoonful of polish evenly over the entire surface of the pad cover. Do not apply polish directly to car. This first application should do about 1/3 of an average size car. For the second and third applications of polish, repeat as above. The pad cover will not adsorb as much when reloading.





# Operating Instructions

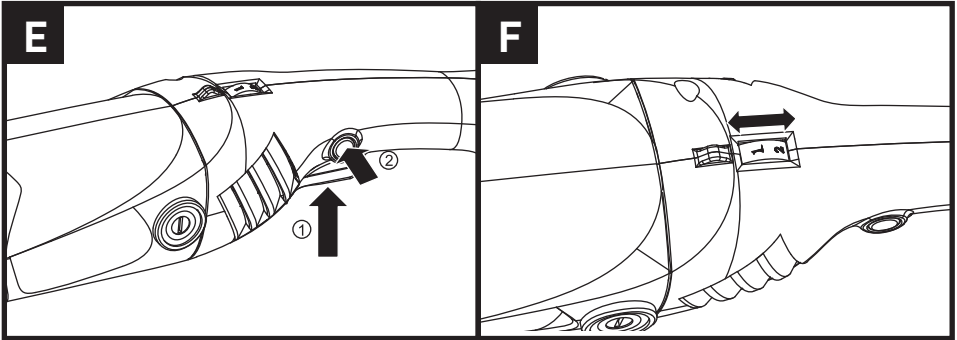
## 5. SWITCH ON AND OFF (SEE FIG. E)

To switch on, depress the on/off switch then the lock on switch. Your tool is now locked on for continuous use. The on/off switch can now be released.

To switch off your tool just depress and release the on/off switch.

## 6. VARIABLE SPEED CONTROL (SEE FIG. F)

The speed increases as you turn the switch towards the higher number and decreases on the lower number (1 to MAX).



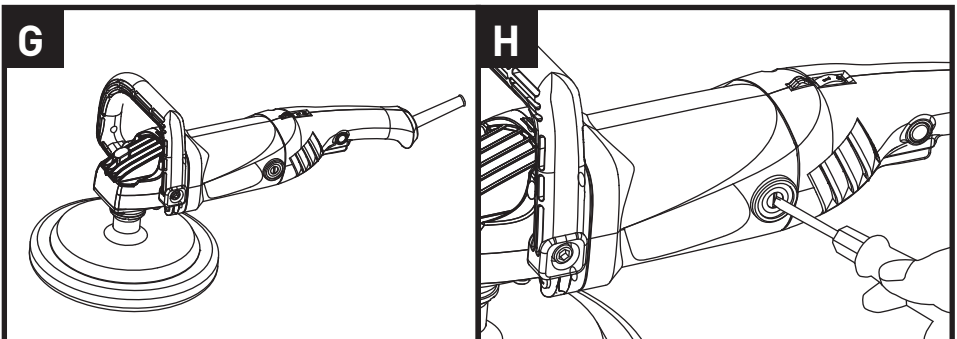
## 7. HAND GRIP AREAS (SEE FIG. G)

Always hold your car polisher firmly with both hands when operating.

## 8. TO REPLACE THE BRUSHES (SEE FIG. H)

Completely unscrew the brush cover and pull out the access hatch. Loosen the fixing screw and remove the brush holder out. Check the length of the brush and replace if under 7mm. When brushes need replacement always renew both brushes, even if one is still more than 7mm long. Put the brush holder into the body. Screw down the screw of brush holder. Cover the cap of brush, screw it securely.

Check the tool is working before use, allow it run for a few minutes to enable the brushes to be stable.



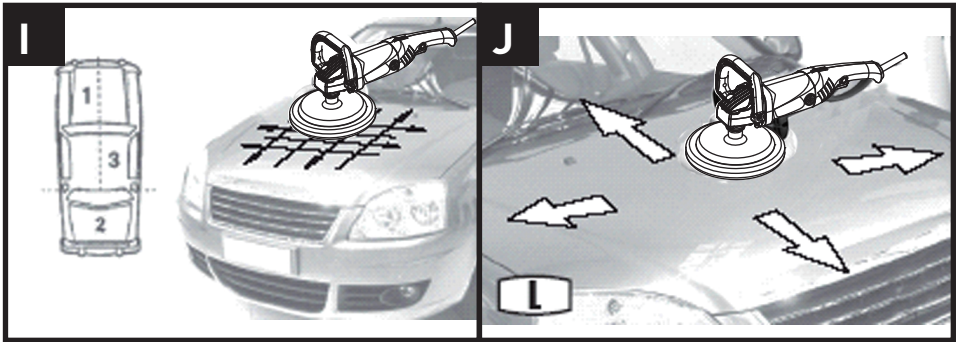
# Operating Instructions

## 9. TO USE THE CAR POLISHER (SEE FIG. I)

Hold extension cord over the shoulder and do flat surfaces first, i.e.: bonnet boot and roof. Cover areas quickly with broad sweeping strokes in a crisscross pattern. Do not press down on polisher. The machine without any pressure will automatically do the best job.

## 10. FINAL WORK (SEE FIG. J)

Use long, sweeping strokes in a criss-cross pattern to bring out the shine. Do not over-press the polisher.



## Working Hints For Your Polisher

1. At all times, let the polisher do the work-do not force it or apply excessive pressure to the polisher. Preferably, use a light circular motion. Pressing too hard will slow down the machine's movement and affect the quality of the work.
2. The most common error, however, is applying too much wax. If pad absorbs too much wax, it will not last as long, and polishing is more difficult and takes longer. If wax seems difficult to buff, you may have used too much wax.
3. If bonnet continually comes off pad, please try with a new bonnet.

## Maintenance

Remove the plug from the socket before carrying out any adjustment, servicing or maintenance.

Your power tool requires no additional lubrication or maintenance. There are no user serviceable parts in your power tool. Never use water or chemical cleaners to clean your power tool. Wipe clean with a dry cloth. Always store your power tool in a dry place. Keep the motor ventilation slots clean. Keep all working controls free of dust. Occasionally you may see sparks through the ventilation slots. This is normal.

If the supply cord is damaged, it must be replaced by the manufacturer, its service agent or similarly qualified persons in order to avoid a hazard.

# Trouble Shooting

1. If your polisher does not operate, check the power at the main plug..
2. If the polisher does not abrade surface, checking the bonnet. If the bonnet has been worn, replace the new bonnet and try again.
3. If a fault can not be rectified, return the tool to an authorized dealer for repair.

# Technical Data

## Technical Data Table

Voltage	230V-240V~50Hz
Power input	1200W
No load speed	600-3000 /min
Pad size	180mm
Spindle thread	M14
Protection class	□/II
Machine weight	3.13kg

**Staple your purchase receipt here**  
**Before returning this product for**  
**warranty or any other reason, please call.**  
**POSITEC AUSTRALIA PTY LIMITED**  
**ABN 14 101 682 357**  
**Unit 15, 23 Narabang Way Belrose 2085 NSW Australia**  
**FREE CALL 1300 889 028**  
**EMAIL:salesau@positecgroup.com**

